



**ASM**  
innovations in access flooring

# Access Floor Finishes

---

## INNOVATIONS IN ACCESS FLOORING





# ASM's Floor Finishes

*Functional  
Durable  
Beautiful*

Building on a successful past, ASM's history is a long one; long on innovation and on quality. Stringent testing and quality control checks developed by ASM's technical team have served our clients well over the decades. Across the board, ASM's product lines are subject to rigorous examination or floor finishes are no exception.

ASM has assembled a comprehensive array of floor finishes, some of which have been selected purely for their exceptional durability and beauty.

For many years, ASM has been providing specialized and high quality flooring products to architects, designers, contractors, distributors, and installers. ASM offers a flooring finish to satisfy every aesthetic requirement. Whether you are flooring the most rugged work space or creating a controlled environment for sensitive instrumentation, ASM has your flooring answer.



## Contents

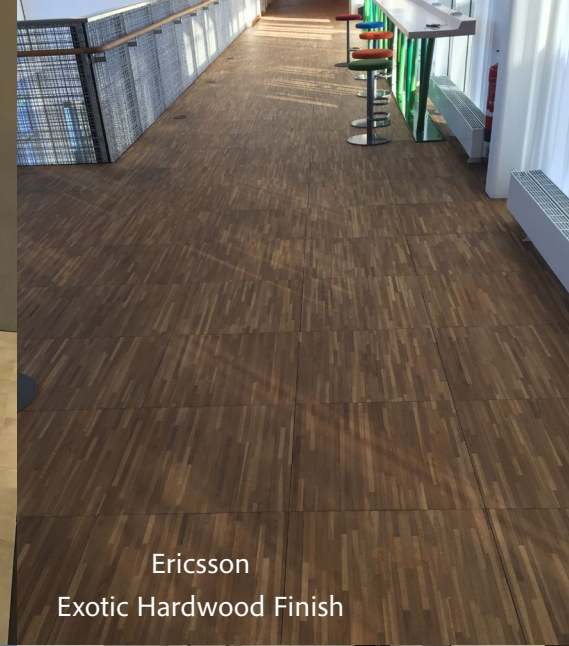
- 2 Contents
- 4-5 High Pressure Laminate Tiles
- 6-7 VPT Conductive Tiles: Contile™ & StatTile™
- 8-9 Rubber Tiles: Antistatic & Standard
- 10-19 Specialty Tiles

Need a custom color?

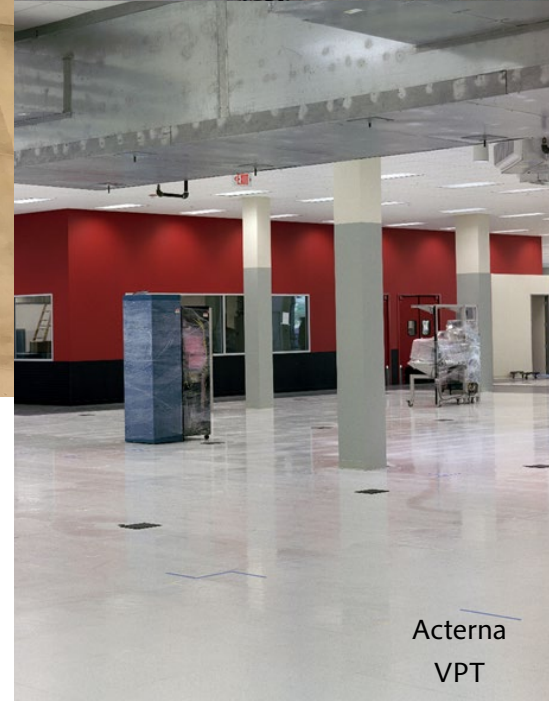
Send us your sample and we will match your custom color



Porcelain



Ericsson  
Exotic Hardwood Finish



Acterna  
VPT

**DESIGNED  
SPECIFICALLY FOR  
RAISED ACCESS  
FLOORS**



Wood  
High Pressure Laminate



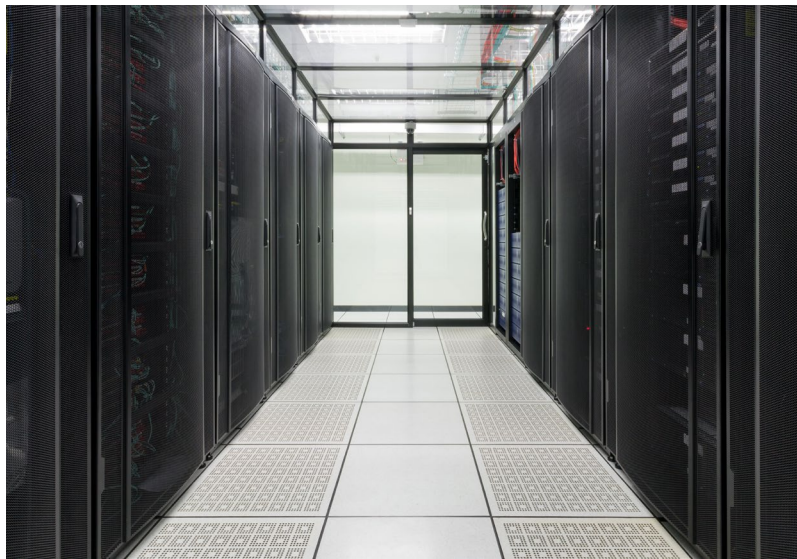
Ericsson  
VPT



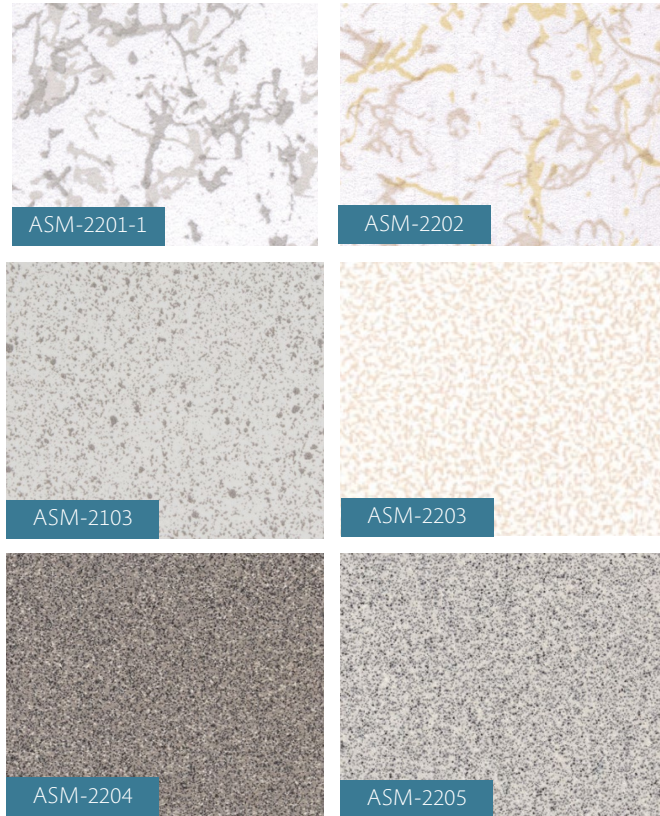
## High Pressure Laminate & Solid Finishes

High pressure plastic laminate is used in 90% of all computer room applications, and is the largest product used on factory laminated floor finishes.

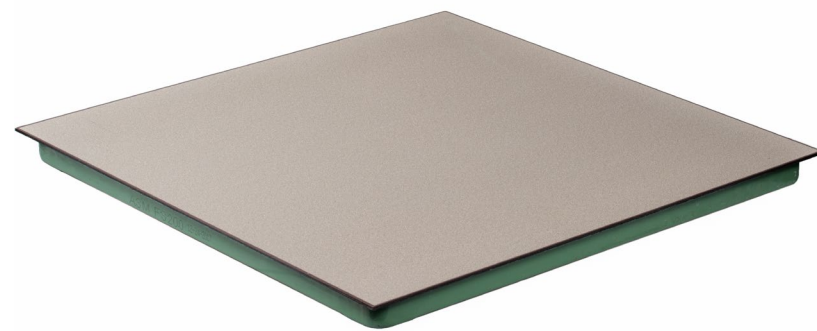
Laminate is a one piece tile (24" x 24"), and unlike vinyl, will provide a uniform finish with no joints. HPL has the advantage of not requiring wax or maintenance that could produce static problems in the data center.



# ASM



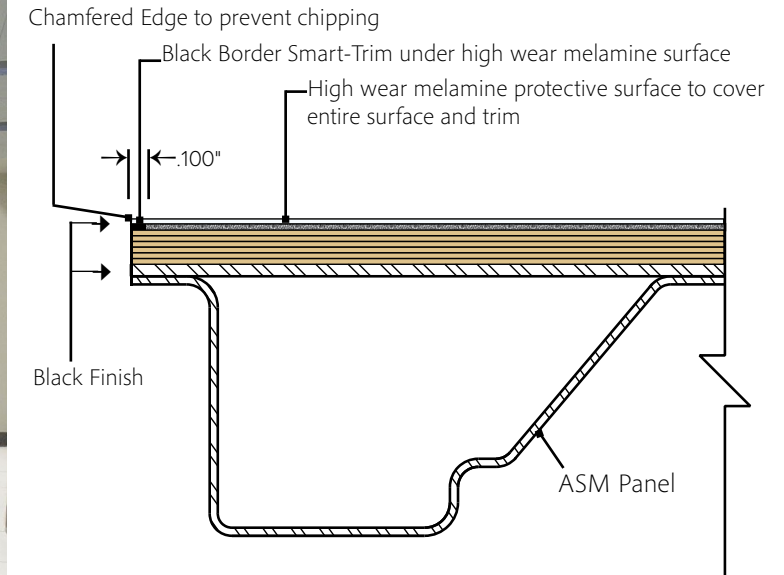
- 20 % Better wear surface results than competition
- Revolutionary trim that is printed into the laminate under the high wear finish
- No routing or removal of high wear surface
- No exposed paper core to absorb dirt and moisture
- No recess or step down. Reduces chipping and caster noise. Eliminates dirt trap
- No surface applied paint or inks - cannot wear off.



## Smart - Trim (Patent Pending)



## Innovations in Access Flooring



### ASM Laminate Performance Specifications

| Properties                  | NEMA Test Method | NEMA Standard    | ASM Laminate Results                       |
|-----------------------------|------------------|------------------|--|
| Electrical Resistance       | NFPA 99          | -                | 1.0x10 <sup>6</sup> - 2.0x10 <sup>10</sup> |
| Stain Resistance            | 3.4              | No Effect        | No Effect                                  |
| Boiling Water Resistance    | 3.5              | No Effect        | No Effect                                  |
| High Temperature Resistance | 3.6              | Slight Effect    | No Effect                                  |
| Wear Resistance             | 3.13             | 3000 cycles/min. | 3000+                                      |
| Scuff Resistance            | 3.16             | No Effect        | No Effect                                  |

OUR EXPERIENCE & SOLUTION

SMOOTH  
SEAMLESS  
WEARPROOF



# ConTile & StatTile

combines function with lasting beauty when high performance ESD flooring is a must

VPT uses a process to ensure the conductive elements are distributed evenly through the entire tile thickness. This, along with the finest materials, ensures a lifetime of consistent conductivity regardless of wear.

VPT carries a lifetime conductivity warranty.

VPT has a superior polished finish that does not require special treatments or waxes to maintain conductivity or appearance.

VPT has 12 colors to meet the needs of the most discerning designers.

VPT is resistant to very strong chemicals.

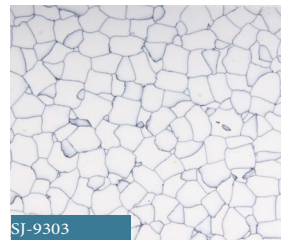
- . acids
- . strong alkalis
- . alcohols
- . aromatic solvents
- . aliphatic solvents



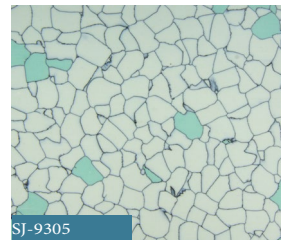
SJ-9301



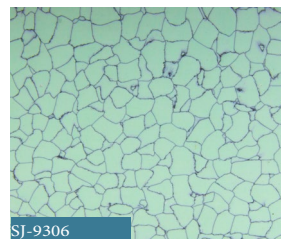
SJ-9302



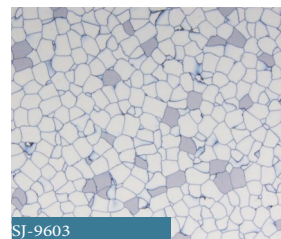
SJ-9303



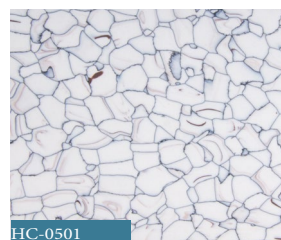
SJ-9305



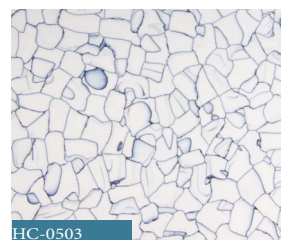
SJ-9306



SJ-9603



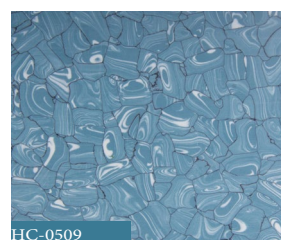
HC-0501



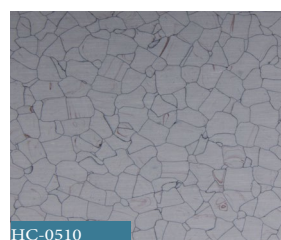
HC-0503



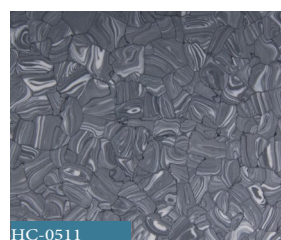
HC-0506



HC-0509



HC-0510



HC-0511

The use of VPT conductive or static dissipative floor covering checks the influence of electrostatic charges in the sensitive work places. The effects of electrostatic influence are very serious, and many of the incidents include damage to integrated circuits in semiconductor production and loss of valuable data from malfunction of computer equipment caused directly by a buildup of static electricity.

There are also some cases of inadvertent ignition of inflammable and explosive substances caused by static discharge.

When two objects with electrostatic charge come into contact or friction, electron movement occurs with electrification to positive and negative poles which are stationary at the points of mutual contact, a direct action against these points will cause instantaneous electric discharge, the result being damage to products, pollution or malfunction. Because of this, both UL and NFPA strongly recommend the use of conductive floor coverings.

Where VPT is recommended:

- . electronic manufacturing facilities
- . computer/server room installations
- . clean rooms
- . assembly factories
- . telecommunication rooms
- . health care laboratories



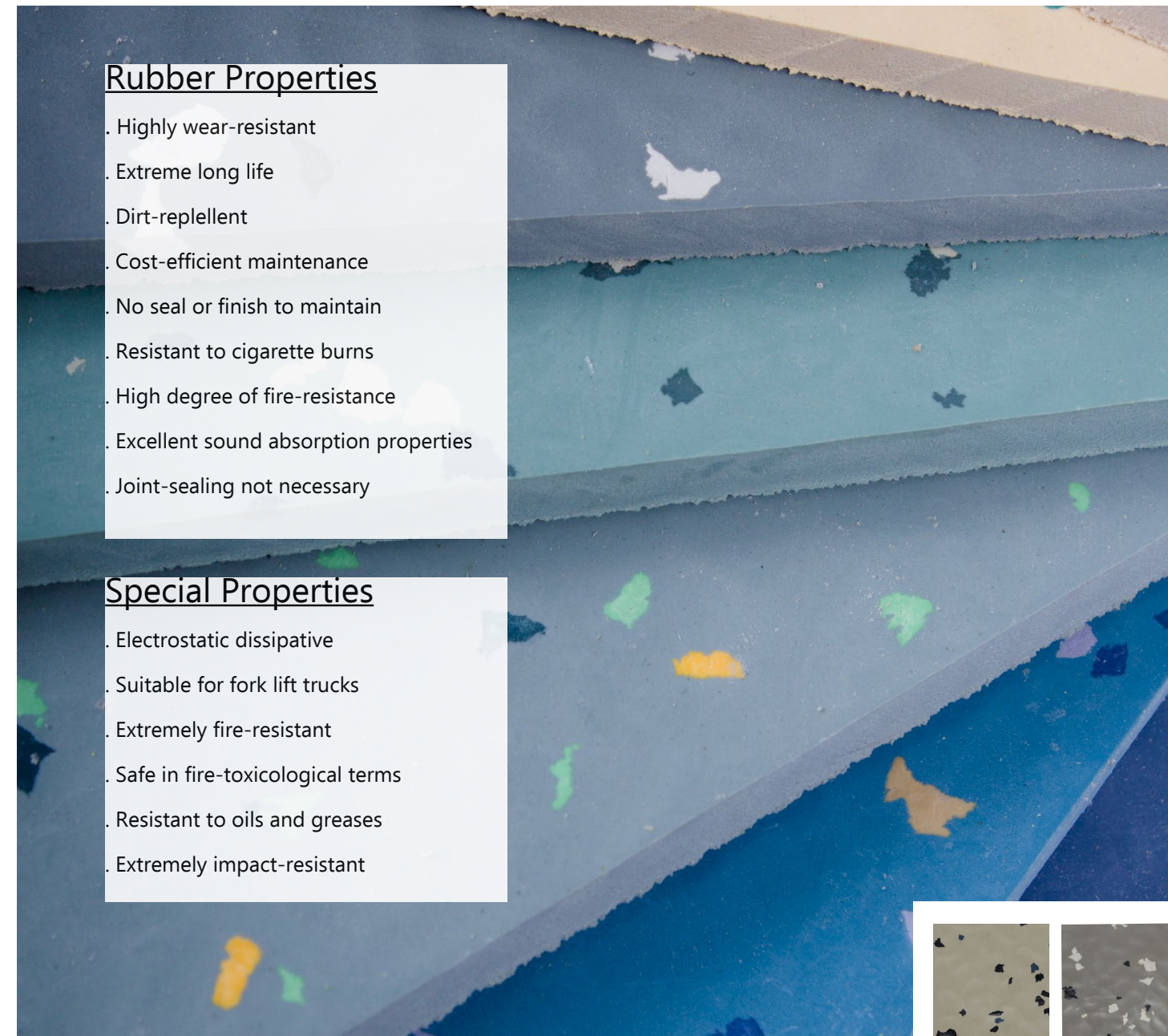
# VPT

| Performance                 | Conductive  | Static Dissipative                   |
|-----------------------------|---|--------------------------------------|
| Resistance: point to ground | 2.5x10 <sup>4</sup> to 10 <sup>6</sup> Ω                    | 10 <sup>6</sup> to 10 <sup>8</sup> Ω |
| Resistance: point to point  | 2.5x10 <sup>4</sup> to 10 <sup>6</sup> to 10 <sup>6</sup> Ω |                                      |
| Static decay                | 5000 to 0 volts in < 0.01 sec.                              | 5000 to 0 volts in < 0.2 sec.        |





# Anti-Static Rubber Tile

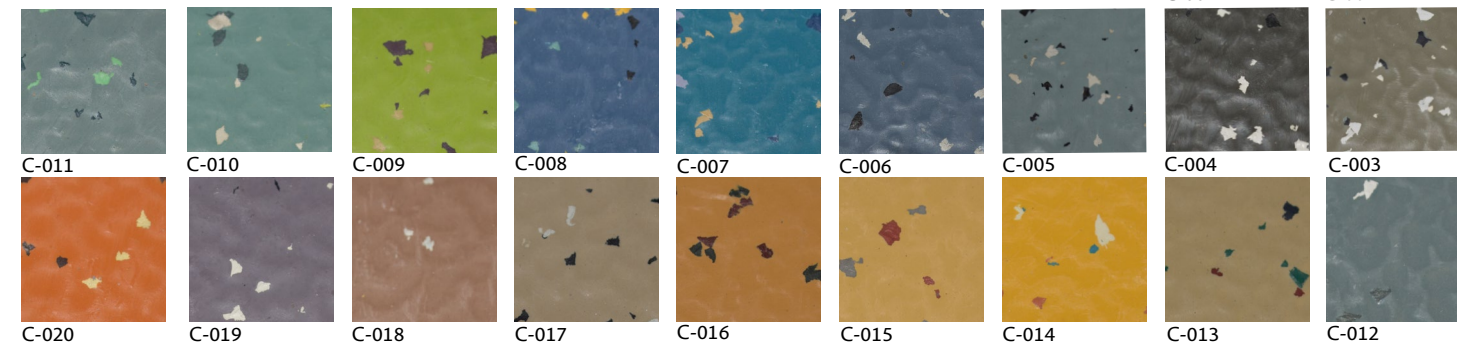


## Rubber Properties

- Highly wear-resistant
- Extreme long life
- Dirt-repellent
- Cost-efficient maintenance
- No seal or finish to maintain
- Resistant to cigarette burns
- High degree of fire-resistance
- Excellent sound absorption properties
- Joint-sealing not necessary

## Special Properties

- Electrostatic dissipative
- Suitable for fork lift trucks
- Extremely fire-resistant
- Safe in fire-toxicological terms
- Resistant to oils and greases
- Extremely impact-resistant



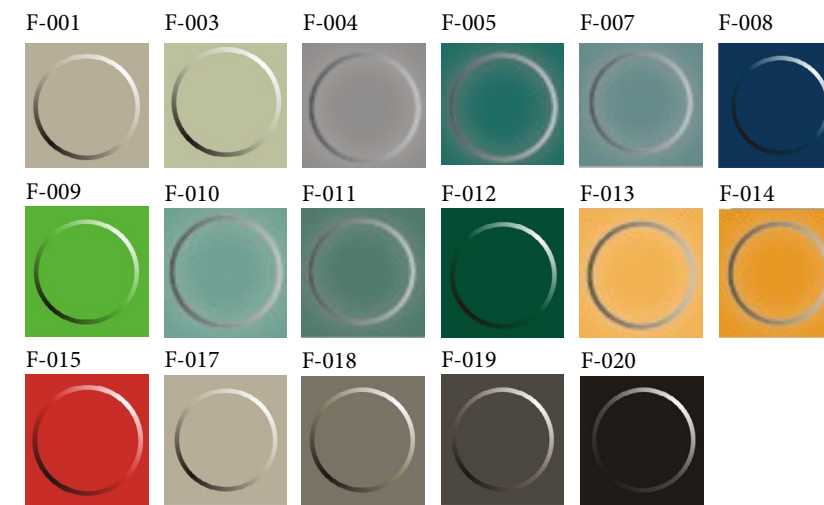
Available in a hammered finish or smooth finish

# Standard Rubber Tile

Safe, beautiful and hard wearing for a variety of applications.

## Electrostatic Protection

- Static generation less than 20 volts per AATCC-134
- Easy to maintain - no conductive wax necessary
- Chemical and hot solder resistant
- Resistant to most oils and grease
- Ultra low vibration
- Outgassing according to ASTM-E-595-84 VCM less than 1.2%



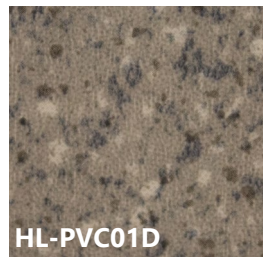
- Data Centers
- Health care facilities
- Industrial buildings
- High traffic public venues
- Leisure facilities
- Airports and terminals
- Schools and institutions
- Office buildings

| Test                                       | Average Results          |
|--|--------------------------|
| Length & Width Size Deviation              | ± 0.1%                   |
| Diagonal Corners Squareness Deviation      | ≥ 0.008" (0.20 mm)       |
| Hardness Shore "A" Durometer               | > 85                     |
| Tensile-Strength                           | > 1450 psi (10 Mpa)      |
| Bending Resistance (3/4" metal rod)        | No Effect                |
| Peeling Strength                           | ≥ 5620 lbf/in (25 kN/mm) |
| Wear Resistance (mm/5N) Roller Type        | ≤ 150                    |
| Thermal Stability (dimensional change)     | ≤ ± 0.4%                 |
| Fire Resistance                            | Yes                      |
| Resistance to Cigarette Burns              | Third Degree             |
| Resistance to Chemicals (carbon black ink) | No Visible Change        |
| Electrical Properties Volume Resistance    | ≥ 10 <sup>10</sup> Ω     |
| Light Resistance                           | Third Degree             |
| Brittleness Temperature                    | ≤ 5° F (-15° C)          |
| Indentation Residual Level                 | ≤ 0.010" (0.25 mm)       |



# LUXURY VINYL

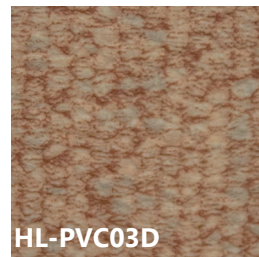
Low-maintenance floor that takes on traffic and spills. Vinyl flooring lets you transform any area with gorgeously realistic and durable designs.



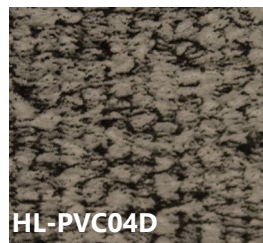
HL-PVC01D



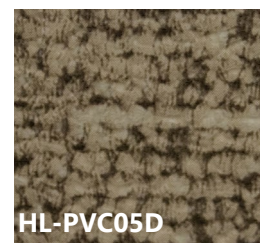
HL-PVC02D



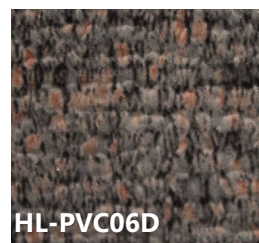
HL-PVC03D



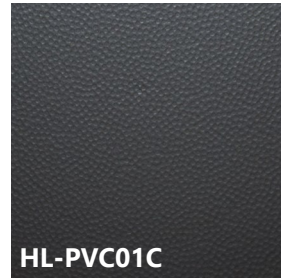
HL-PVC04D



HL-PVC05D



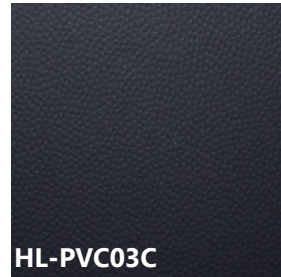
HL-PVC06D



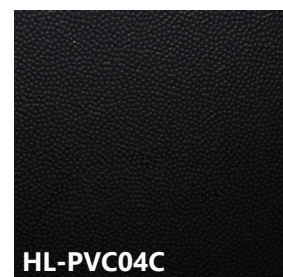
HL-PVC01C



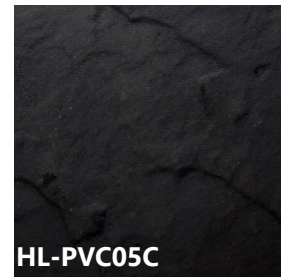
HL-PVC02C



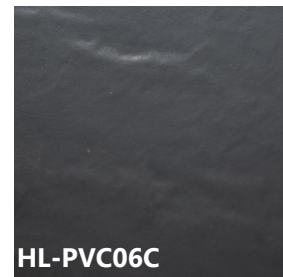
HL-PVC03C



HL-PVC04C



HL-PVC05C



HL-PVC06C

- Office Buildings
- Lobby & Reception Areas
- Board Rooms
- Corridors
- Administrative Offices
- Sales Offices
- Airports

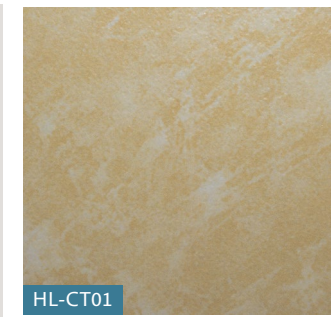
## PORCELAIN FINISH

Your design ideas in one place



Spyscape Museum NYC  
Porcelain Tile

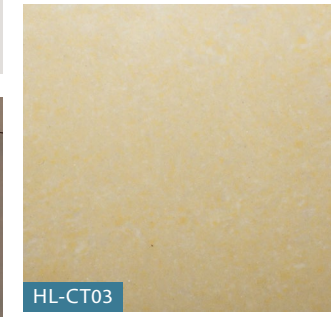
Versatile and elegant, porcelain floor tiles are innovative products that is gaining popularity among builders.



HL-CT01



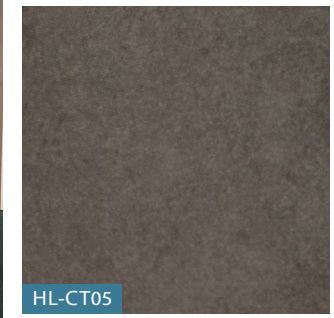
HL-CT02



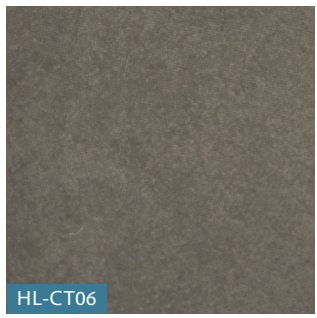
HL-CT03



HL-CT04



HL-CT05



HL-CT06

### Beautifully Selected Porcelain

- Office Buildings
- Lobby & Reception Areas
- Board Rooms
- Corridors
- Administrative Offices
- Sales Offices
- Airports



\* NOTE: CA200 PANEL SERIES - CONTACT YOUR SALES REPRESENTATIVE FOR DETAILS





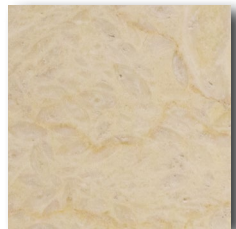
## NATURAL MARBLE FINISH



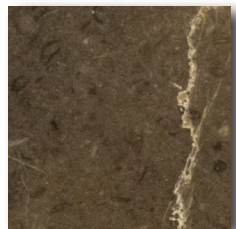
HL-MT01



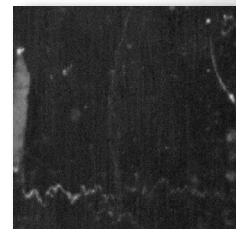
HL-MT02



HL-MT03



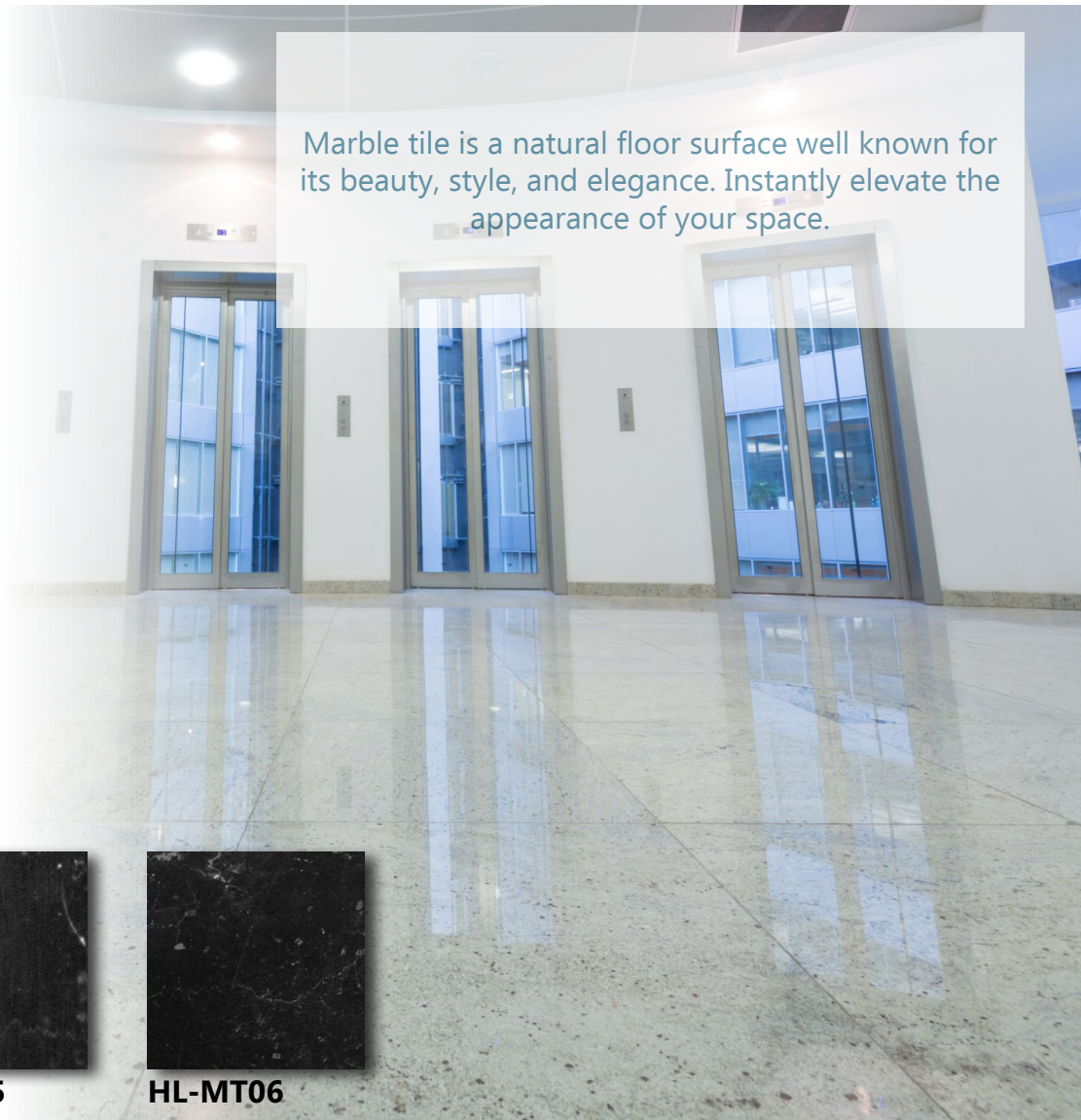
HL-MT04



HL-MT05

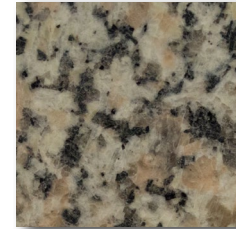


HL-MT06



Marble tile is a natural floor surface well known for its beauty, style, and elegance. Instantly elevate the appearance of your space.

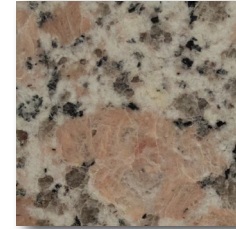
## NATURAL GRANITE FINISH



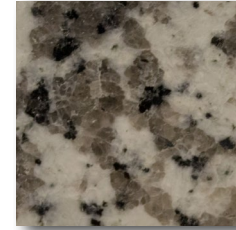
HL-ST01



HL-ST02



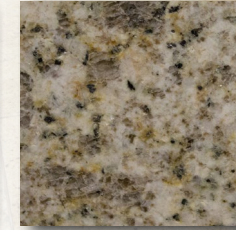
HL-ST03



HL-ST04



HL-ST05



HL-ST06



### APPLICATIONS

- Office Buildings
- Lobby & Reception Areas
- Board Rooms
- Corridors
- Administrative Offices
- Sales Offices
- Airports



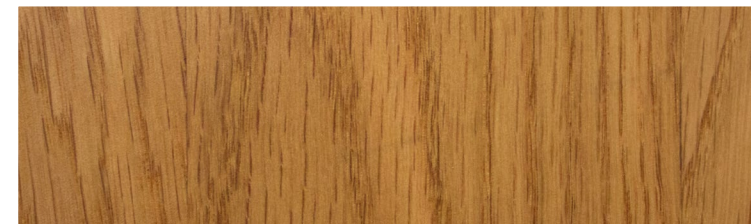
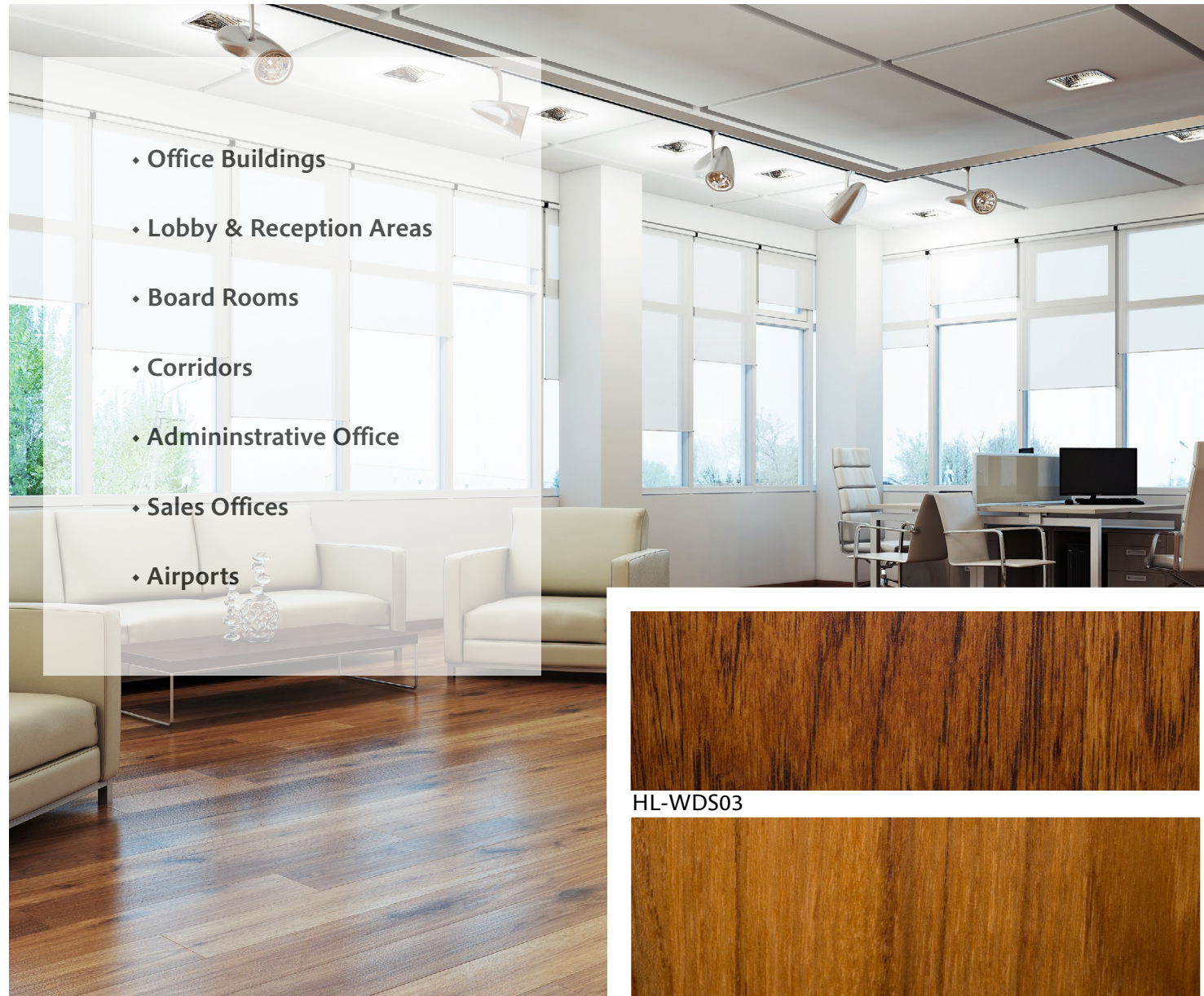
### APPLICATIONS

- Office Buildings
- Lobby & Reception Areas
- Board Rooms
- Corridors
- Administrative Offices
- Sales Offices
- Airports

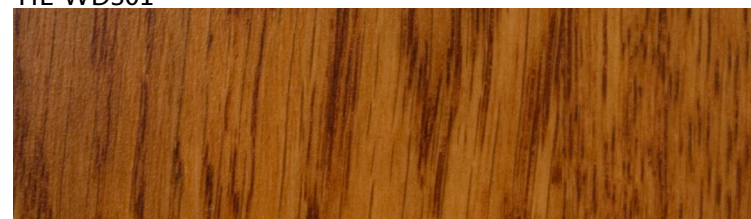




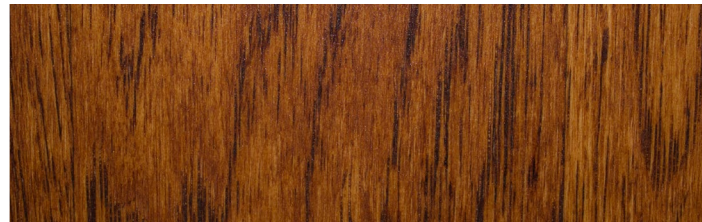
# Hardwood



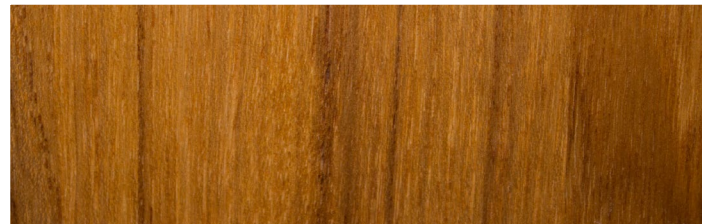
HL-WDS01



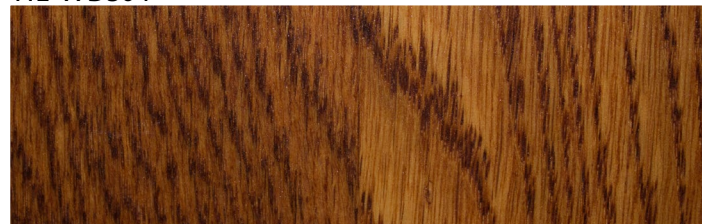
HL-WDS02



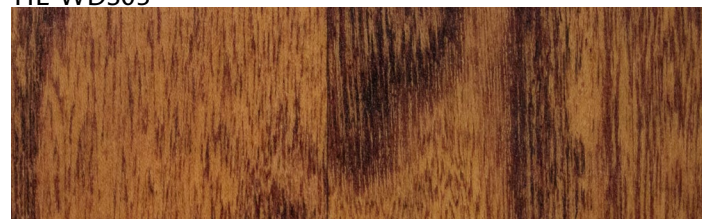
HL-WDS03



HL-WDS04



HL-WDS05



HL-WDS06

# Wood Grain High Pressure Laminate

Add warmth to your interior with wood grain high pressure laminates.

ASM's wood grain high pressure laminate is the surface solution for high-use applications in offices, lobbies/reception areas, educational institutions, sales offices, board rooms, and more.



Maple

3065



Light Sapele

3021



Sapele

3022



Light Beech

3023



Cherry

3038



Beech

3040



Light Cherry

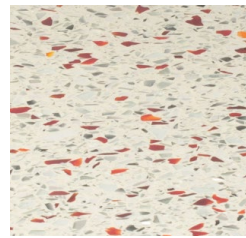
3045



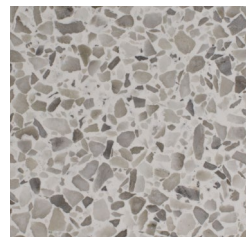
# Terrazzo



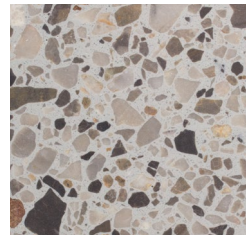
- Office Buildings
- Lobby & Reception Areas
- Board Rooms
- Corridors
- Administrative Office
- Sales Offices
- Airports



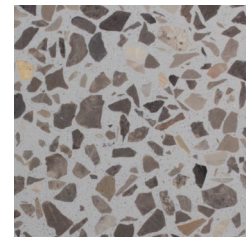
T-102



T-103



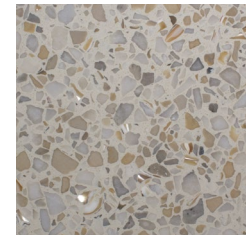
T-181



T-182



T-183



T-191



ASM MODULAR SYSTEMS, INC.

No matter what your architectural requirements, style or budget, ASM can provide the answer to your flooring challenges.

Use of this tile is environmentally clean and prevents off gassing for a healthy work environment and helps contribute towards LEEDS.

ASM incorporates a wide range of naturals and composites in its repertory of tile materials. Whether you need the elegant glamour of stone, warmth of wood, or the color impact of solid vinyl, ASM has a finish for you.

Today's construction typically requires technical properties exceeding the traditional boundaries of aesthetics and durability. The work environment of the present and future demand a sensitivity to instrumentation: building finishes that have been engineered to create a safe environment for electronics and equipment.

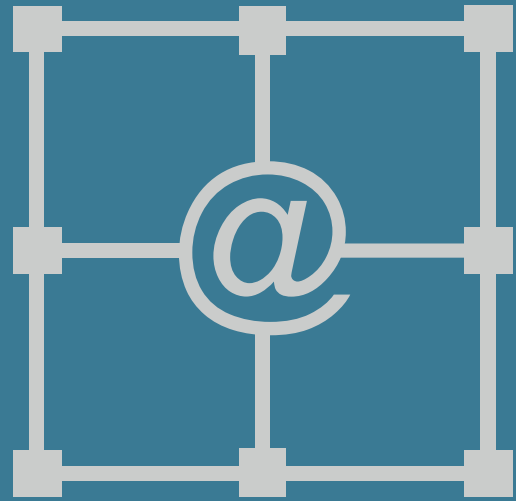
Unparalleled engineering and quality control, innovative materials to accommodate today's refined design trends.

With its classic look, durability, and low maintenance, Terrazzo is a great selection for your next project.

For more information:  
 ASM Modular Systems, Inc.  
 (843) 534-1110  
 www.asmproducts.com



## SPECIALTY FLOORS

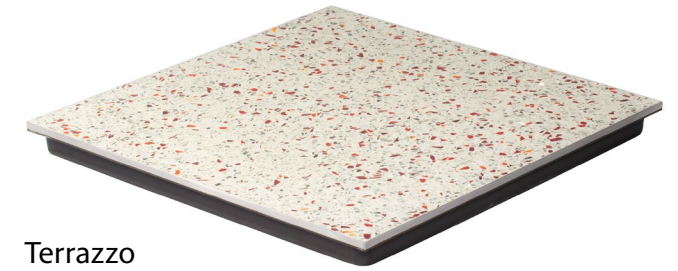


[www.asmproducts.com](http://www.asmproducts.com)

## COMMERCIAL FLOORING S O L U T I O N S



Rubber



Terrazzo



CS-Wood



Granite



Marble



Exotic Wood



Luxury Vinyl



Porcelain



Helping you become  
LEED Certified



USA Design & Engineering + USA Quality & Testing  
GLOBAL VISION



Laminates

Woods

Porcelain

Marble

Rubber

ESD & Luxury Vinyls

HPL

Granite

Exotic Hardwood

Terrazzo



Contact one of our Flooring Specialists:

---

Ph: 843-534-1110

Fax: 843-534-1111

Email: [info@asmproducts.com](mailto:info@asmproducts.com)

Website: [www.asmproducts.com](http://www.asmproducts.com)

---

Location:

9500 Industrial Center Drive

Ladson, SC 29456

ASM is a member of:

