

4

3

2

1

TERMINATION PER FIELD SITE

D

C

B

A

D

C

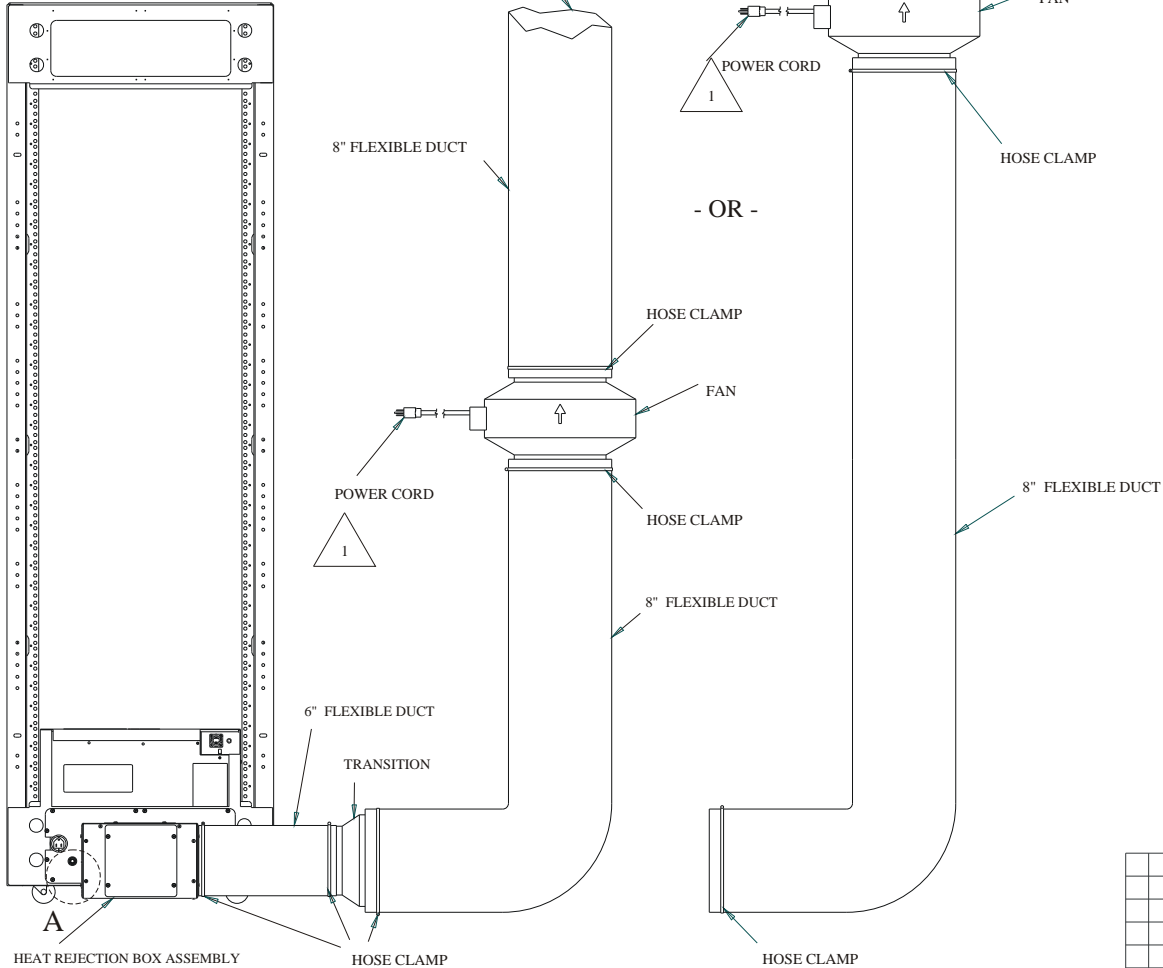
B

A

REVISIONS			
REV.	DESCRIPTION	DATE	APPROVED
1	ADD NOTES 2 THROUGH 9 E010616	7/19/01 B. Adolph 7/19/01 F. DiPaolo	

NOTES:

- 1 WIRE COLOR CODES ARE AS FOLLOWS:  
L1- BLACK OR BROWN  
L2 OR N - WHITE OR BLUE  
GROUND - GREEN WITH YELLOW TRACER
- 2 DETERMINE PREFERRED LOCATION FOR 6" DISCHARGE AIR COLLAR, MOUNTED ON HEAT REJECTION BOX ASSEMBLY (LEFT, RIGHT, REAR OR TOP). EXCHANGE WITH SOLID PLATE IF REQUIRED.
- 3 ATTACH 12" PIECE OF FLEXIBLE 6" CLEARANCE DUCT TO COLLARS WITH HOSE CLAMPS. INSULATION SHOULD BE OUTSIDE OF HOSE CLAMPS. AVOID SKIN EXPOSURE TO INSULATION FIBERS. USE DUCT TAPE TO CONTAIN FIBERS AFTER SECURING CLAMPS.
- 4 ATTACH MOUNTING BRACKET TO BLOWER. INSTRUCTIONS PROVIDED WITH BRACKET.
- 5 BRIEFLY APPLY POWER TO BLOWER TO CONFIRM AIRFLOW DIRECTION.
- 6 MOUNT BLOWER USING BRACKET.
- 7 ATTACH 8" FLEXIBLE DUCT TO TRANSITION PIECE AND BLOWER USING SAME PROCESS AS NOTE 3.
- 8 ATTACH CUSTOMER SUPPLIED DUCT (IF REQUIRED) AND APPLY POWER TO BLOWER.
- 9 ROUTE ECM AND UPS POWER CORDS AND THE CONDENSATE DRAIN LINE THROUGH HEAT REJECTION BOX ASSEMBLY.



QUANTITY REQUIRED	ITEM NO.	IDENTIFYING DRAWING NO.	PART OR GROUP	NOMENCLATURE OR DESCRIPTION
4	3	2	1	GP

**PARTS LIST**

THIS DOCUMENT CONTAINS CONFIDENTIAL AND PROPRIETARY INFORMATION OF LIEBERT CORPORATION AND NEITHER IT NOR THE INFORMATION CONTAINED THEREIN SHALL BE DISCLOSED TO OTHERS OR REPLICATED OR USED FOR OTHERS WITHOUT THE EXPRESS WRITTEN CONSENT OF LIEBERT CORPORATION.

**MATERIAL NOTE :**

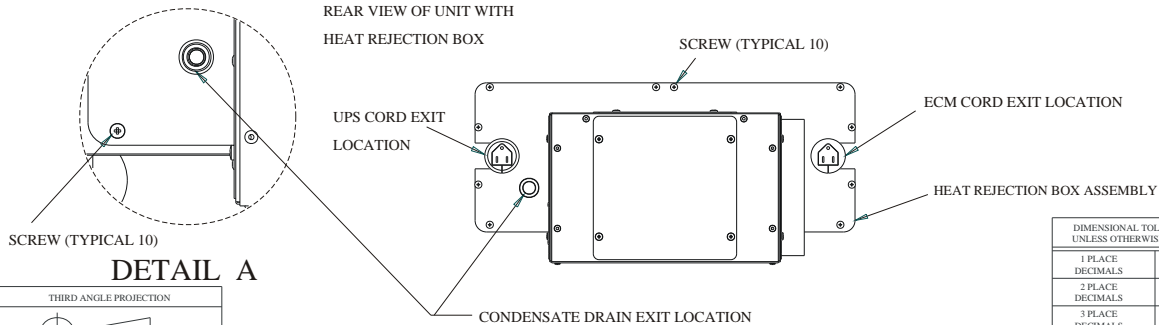
FABRICATE FROM THE MATERIAL SPECIFIED IN ACCORDANCE WITH THE CURRENT APPLICABLE LIEBERT ENGINEERING SPECIFICATION OR AS OTHERWISE SPECIFIED ON THIS DRAWING.

**Liebert**  
1000 DEARBORN DRIVE, P.O. BOX 2936, COLUMBUS, OHIO 43229

TITLE  
**HEAT REJECTION DUCT FOUNDATION**

DIMENSIONAL TOLERANCES UNLESS OTHERWISE NOTED		FSCM NO.	DATE	SCALE	PARTS LIST	
1 PLACE DECIMALS	± .1	55455	5/4/2001	NONE	DIMENSIONS ARE IN INCHES UNLESS OTHERWISE SPECIFIED ON VIEW SCALE DRAWINGS	
2 PLACE DECIMALS	± .03	DRAWN	DATE	CLASS	DRAWING NO.	
3 PLACE DECIMALS	± .015	B. Adolph	5/4/2001	1	163539	
ANGULAR	± 2°	ENGRG.	DATE	SHEET	REV.	
		S. Rees	5/4/2001	1	1	
		DRAWN	DATE	DISTR. CODE		
				D H N R		

REAR VIEW OF UNIT WITH HEAT REJECTION BOX



DETAIL A

SCREW (TYPICAL 10)

SCREW (TYPICAL 10)

UPS CORD EXIT LOCATION

ECM CORD EXIT LOCATION

HEAT REJECTION BOX ASSEMBLY

CONDENSATE DRAIN EXIT LOCATION

THIRD ANGLE PROJECTION



4

3

2

1

DISTR. CODE	D	H	N	R
-------------	---	---	---	---