

UNIT TYPE

PW102ME0U027

FILE NAME

PW102ME0U027

PRODUCT SPEC. DRAWING
EATON POWER QUALITY
(C) EATON 2007

RELEASE DATE 13 SEPT 07 ISSUE 01

APHEL PART # SL-10004

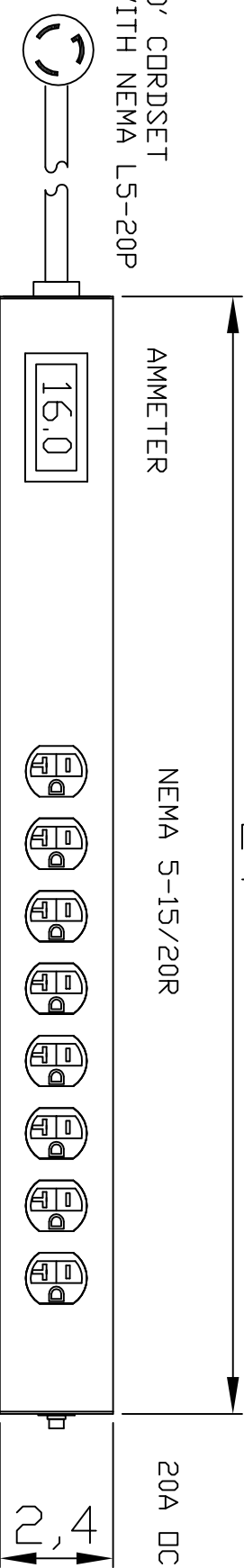
24

AMMETER

NEMA 5-15/20R

20A DCP

10' CORDSET
WITH NEMA L5-20P



mounting brackets

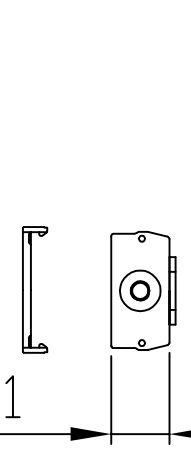
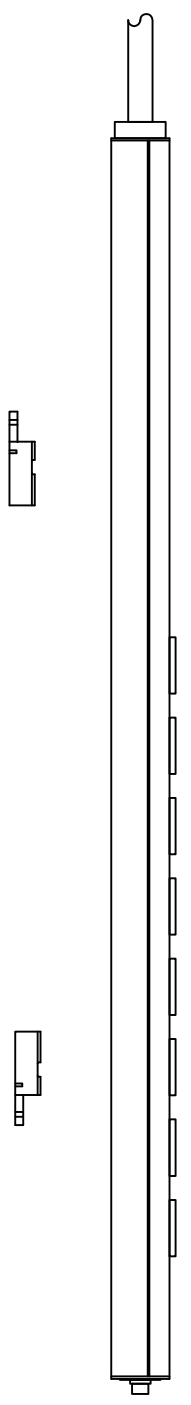
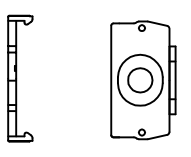
DESCRIPTION: DB2000 SL 16A/120V~
(Max load in line with 80%
branch circuit rating)

CORDSET: 10' 12/3 SJT WITH L5-20P

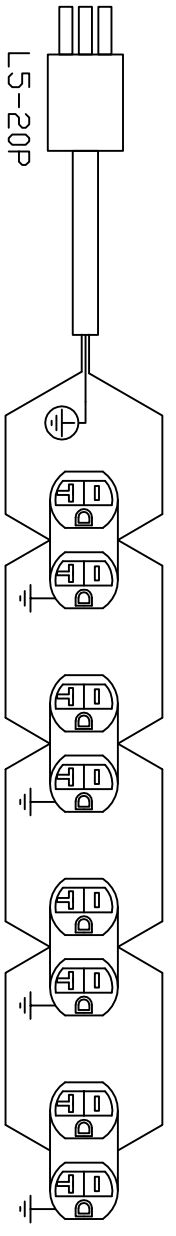
RECEPTACLES 4 x DUPLEX 15/20R (8 TOTAL)

CIRCUIT BREAKER: 20A UL1077

CERTIFICATION: ETL TD UL1363
& CAN/CSA C22.2 No. 21-95



1 1



L5-20P